

Chronic conditions and physiological risk factors for metropolitan residents aged 25 years and over

Chronic Conditions	2002	2003	2004	2005	2006	2007
Diabetes	5.0	6.0	6.1	6.3	7.3	5.9
Heart	7.9	6.5	8.2	7.4	7.3	7.7
Stroke	1.9	2.6	2.7	1.8	2.0	2.4
Cancer	8.4	7.3	8.1	6.1	9.3	6.0
Arthritis	24.9	25.2	26.1	25.0	24.5	23.8
Osteoporosis	NA	5.1	6.2	6.1	5.8	5.7
Asthma	8.1	9.9	9.6	9.6	10.0	9.2
Mental Health	13.5	15.4	13.4	10.7	11.9	13.9
Physiological Risk Factors						
High Blood Pressure	17.5	17.1	18.9	18.6	18.4	17.8
High Cholesterol	13.0	19.5	21.4	19.3	19.1	20.2
Obese	15.0	16.6	16.2	17.3	17.6	21.0



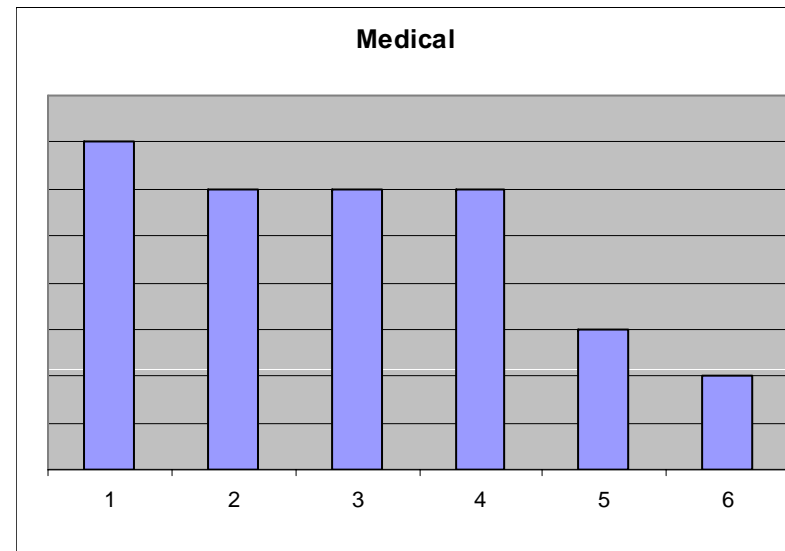
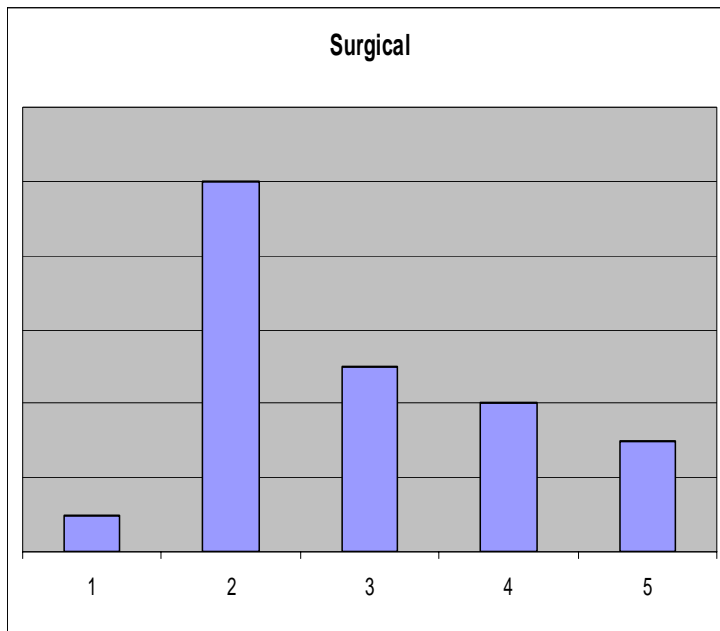
Obesity increasing - 1/5 metro population - 250,630 people

Further 35 % overweight

What do we know??

- Patients older
- Admission rates up
- Average acuity up

What if - New technologies and treatments are driving admission rates?



Demographic Story

from Pyramid to Coffin Changing age structure of the Australian population, 1925-2045

