



Sunshine Coast Hospital

Sunshine Coast Hospital
Ward Planning Issues

we're building a
healthier
community

Ward Planning Major Design Drivers

SIZE OF WARD

- No of Beds – AHFG 28 – 30
- Agreed 24 per ward

Ward Planning Major Design Drivers

SIZE OF ROOM

- 18 sqm – High acuity & Bariatric
- 15 sq.m – Medium acuity - standard
- 12 sq.m – Low acuity
- Agreed 16.5 sq.m for all single rooms

Ward Planning Major Design Drivers

SINGLE BED ROOM ALLOCATION

- Originally allocated in 4 different %ages
 - 30% - 100% depending on Acuity
- Agreed at 60% for all wards except Respiratory

Ward Planning Major Design Drivers

STAFF TRAVEL EFFICIENCY

- 8 Bed pods - Independently run
- Triplicated Utility Rooms
- Triplicated Staff Stations

Ward Planning Major Design Drivers

W.C./SHOWER LOCATION

- Outboard
- Inboard
- Inbetween Rooms

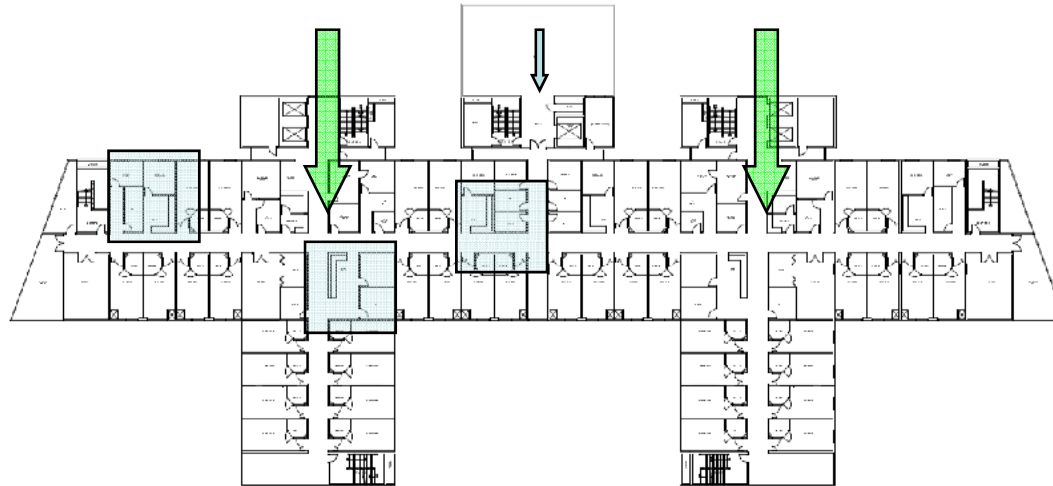
Ward Planning Major Design Drivers

2 MODELS DEVELOPED

- SINGLE CORRIDOR
- RACETRACK CORRIDOR

Ward Planning Options

SINGLE CORRIDOR



Ward Planning Options

PART - RACETRACK SOLUTION

