



SOUTH AUSTRALIA INDUSTRY BRIEFING

Australasian Health Facility Guidelines

20 June 2006

Web: www.chaa.net.au

OVERVIEW OF PRESENTATION:

Introduction:

Derek Exton, Asset Services, DHS

Australasian Health Facility Guidelines:

Jane Carthey, Director, CHAA

*Patrick Chu, Project Manager, Aust HFG Project,
CHAA*

Panel Discussion

Overview of CHAA Presentation: Australasian Health Facility Guidelines:

Jane Carthey, Director, CHAA

CHAA research program including Health Facility Guidelines

Aust HFG Project: development parameters, structure, governance, features, review and variation processes.

*Patrick Chu, Project Manager, Aust HFG Project,
CHAA*

Project Coordination Working Party Progress

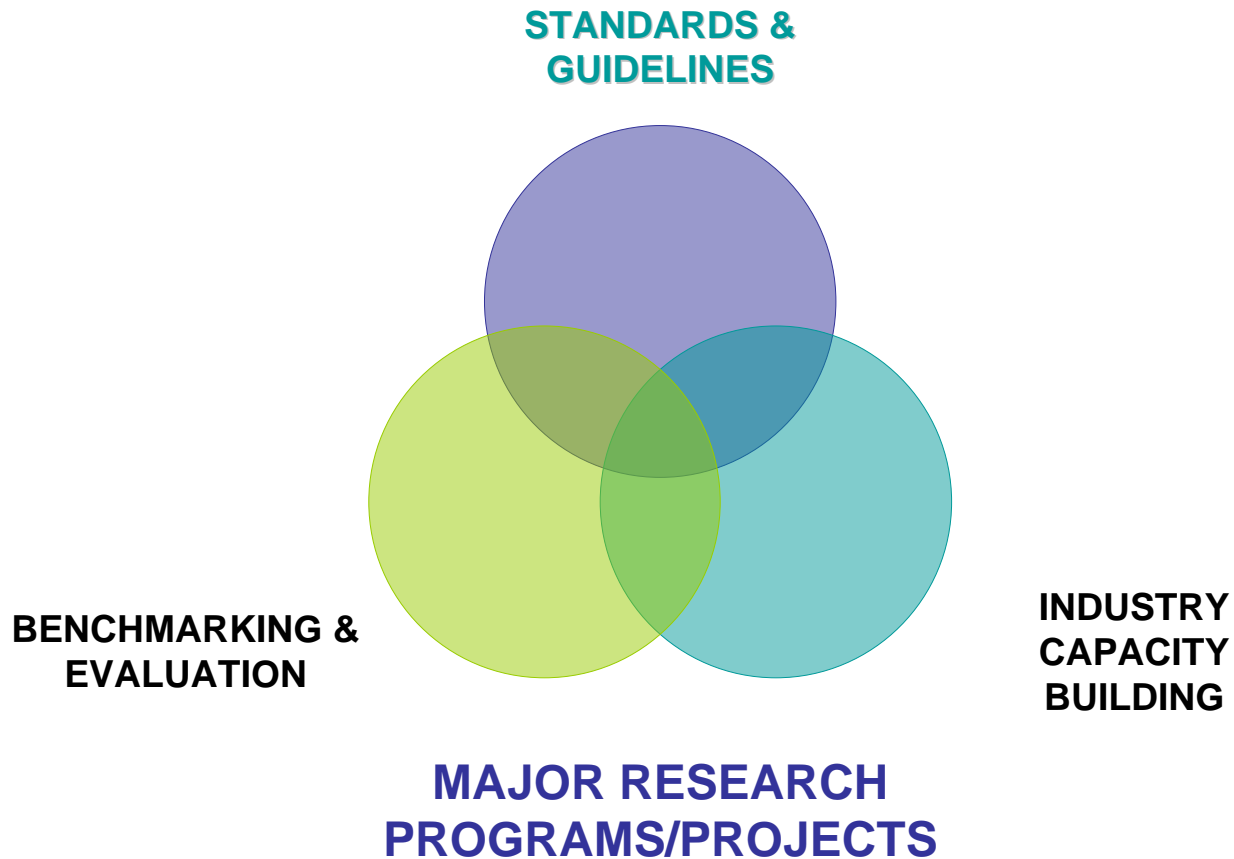
Time Frame for Review

Demonstration: Aust HFG website

CHAA Research Themes

1. Health facility standards and guidelines
2. Benchmarking and post occupancy evaluation
3. Capacity building/knowledge management

CHAA Research Programs



CHAA Research Program

1.0 STANDARDS & GUIDELINES 2006

1.1 NSW Health Facility Guidelines

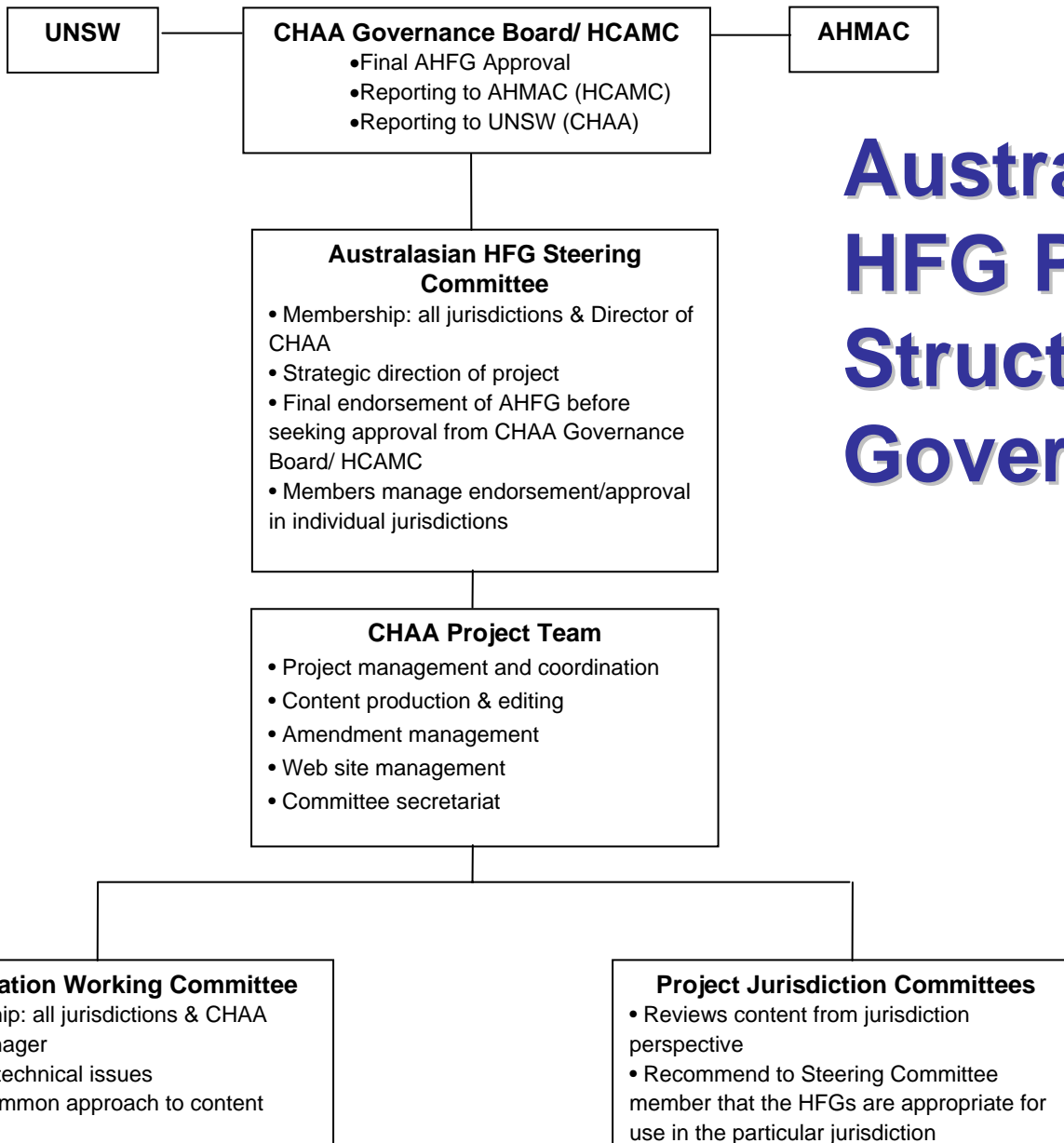
- *continues* development of the NSW guidelines that will continue to be translated into the National project.
- *develops* HFG content for use by NSW Health Facility Briefing system

CHAA Research Program

1.0 STANDARDS & GUIDELINES 2006

1.2 Australasian Health Facility Guidelines

- In 2005 *analysed* the needs of each jurisdiction
- In 2006 project is conducted in accordance with a *work and implementation plan*.



Australasian HFG Project Structure & Governance

Australasian Health Facility Guidelines

- **System Parameters include**

- Regulatory environment – mandated or advisory only
- Public and private funder requirements
- Quality/experience/availability of design consultants
- Feedback loops
- Political climate



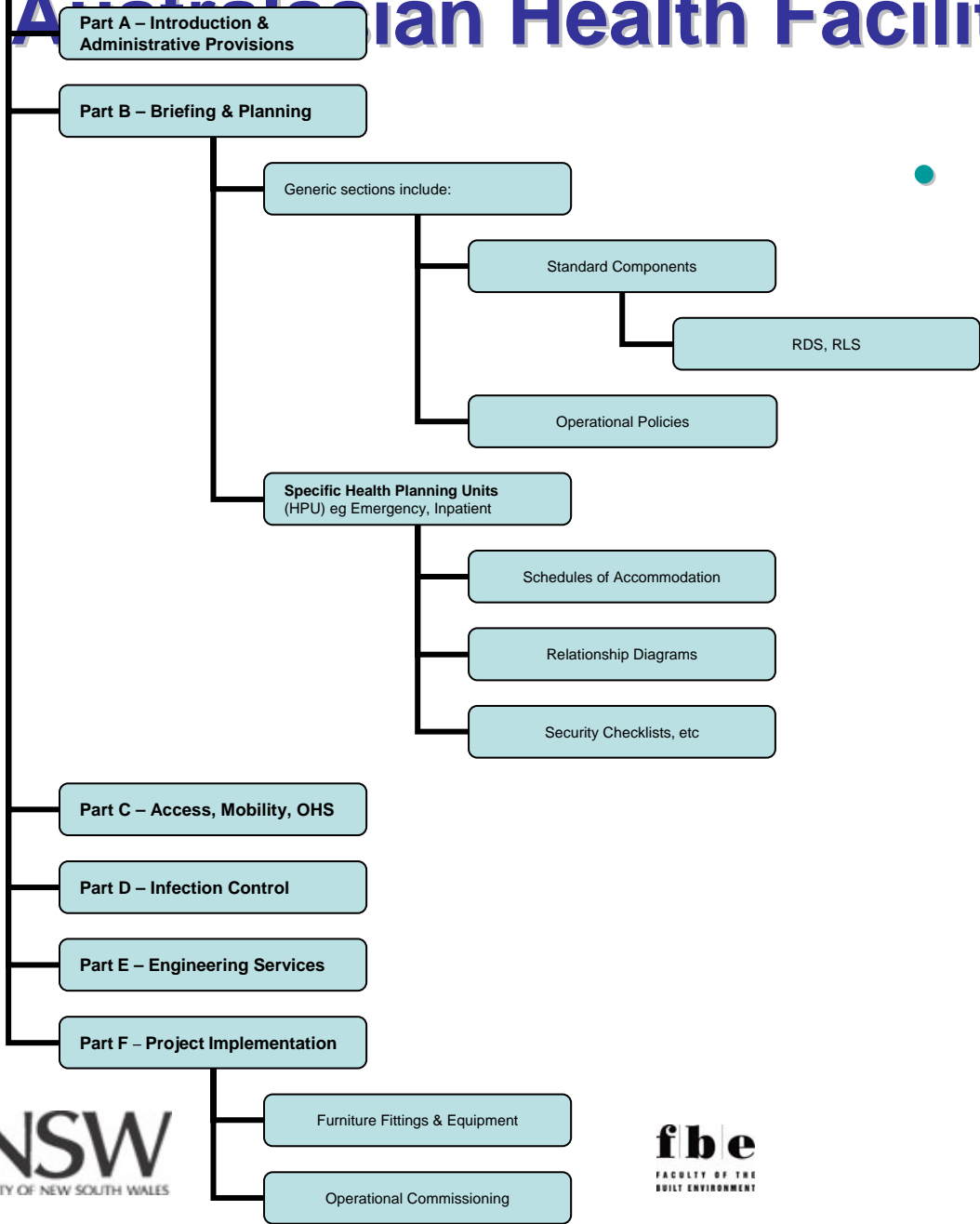
Australasian Health Facility Guidelines

• Key Assumptions

- Reduce debate over repeatable elements
- Simplify design process
- Reduce design variations
- Reduce need for consultation/user groups
- Reduce design time
- Meet minimum legal obligations – standards, codes, etc



Australian Health Facility Guidelines



• Features

- Web access
- Minimal costs to use
- Links to NSW Health Facility Briefing System for use on projects
- Generic parts that cover all health facilities – std comps, RDS, RLS (PDF format)
- Specific parts for specific hospital units HPU (health planning units) or departments

Australasian Health Facility Guidelines

• Health Facility Guidelines are:

- Body of knowledge
- Acceptable/recommended standards to support healthcare delivery
- Focus on smallest element
- ‘room/space’
- Purpose is **briefing** not prescriptive design

Design Guidelines
for Hospitals + Day Procedure Centres

Clause ID: 00001 Category: NSW/AL Origin ID: NSW-HF038

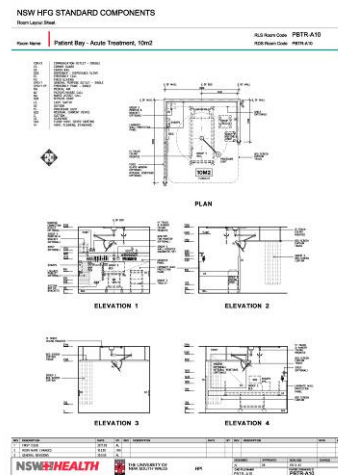
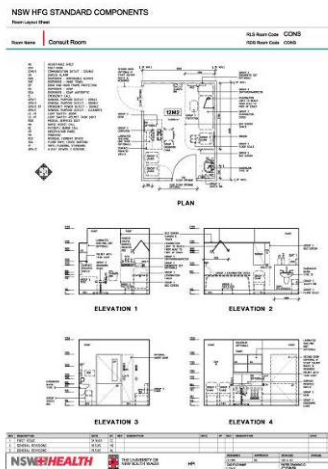
Subject: Part A - Introduction and Instructions for Use

Sub-heading: General

Acknowledgments: NSW Health acknowledges the following contributors to the development of these Health Facility Guidelines:

- The Victorian Department of Human Services for contributing the initial database from which these Guidelines have been developed.
- Health Projects International for advice and assistance in utilising the database.

Part A - Intro	✓	T01
Part B - SD	✓	T02
Part C - Acc/Mod OHS	✓	T03
Part D - Inf Control	✓	T04
Part E - Bldg Serv etc	✓	T05
Part F - Op Com	✓	T06
Part G - Appoint	✓	T07
Attachment	✓	T08
Initial ID	✓	T09
Enclosure ID	✓	T10
Status	✓	T11
Room Code	✓	T12
X Ref	✓	T13
Hyperlink	✓	T14
Operational Use	✓	T15
Opening Details	✓	T16
Infection Control	✓	T17
Indoor Climate	✓	T18
Indoor Light	✓	T19
Community Health	✓	T20
Operational Components	✓	T21
Furn J Bldg Equip	✓	T22
Flood Occupancy Evol	✓	T23



Australasian Health Facility Guidelines

Current status

- **Generic sections under review for Australasian use:**

- Part A
- Part B (general, std comps)
- Part C
- Part D

- **HPU (based on NSW content) available now:**

- Ambulatory Care
- Community Health
- Emergency
- Inpatient
- Intensive Care
- Operating
- Mental Health (adult acute)
- Adolescent & Child Mental Health
- Ambulatory Mental Health

- **Generic Sections currently being developed for Australasian use:**

- Part E Engineering Services

- Psychiatric Emergency Centre (PEC)
- Allied Health
- Clinical Information
- Medical Imaging (CAT, MRI, PET, general)
- Maternity
- Paediatric/Adolescent
- Rehabilitation
- Renal Dialysis

Australasian HFG Parts

Website hosting 'Australasian HFG'

- Commentary (C) – website information/introductory pages, entry point to:

Health Facility Guidelines:

Different purposes/different parts

- Guidance (G) - 'how to do it'
- Performance requirements/recommendations (P) – 'what it should do'
- Advisory (A) – examples of how to achieve it'

Australasian HFG – Status of Different Sections

HFG Part/ component	Guidance (G) <i>'How to do it'</i>	Performance Requirements (P) <i>'What it should do'</i>	Advisory (A) <i>'Examples of how to achieve it'</i>
Status	Not mandatory	May be 'mandatory' or recommended'	Not mandatory but may be: normative' or 'informative'
Part A Introduction & Instructions for Use	How to Use the Guidelines, Outline of structure, content and purpose of each section, Terms of Reference, Tables of abbreviations, glossary, References and further Reading	Not applicable	Not applicable
Part B Briefing and Planning	Section 80 General Requirements (whole section) All HPU sections: -Introduction -Planning Principles	All HPU sections: -Design -Components of the unit: general provisions	Section 90 Standard Components All HPU sections: -Non Standard Components -Schedules of accommodation -Functional Relationship Diagrams -Security Issues/checklists -Other checklists (if produced) -Room Data Sheets -Room Layout Sheets
Part C Access, Mobility, OHS and Security	Introduction Planning	Space Standards and Dimensions Human Engineering Signage Safety and Security	Checklists
Part D Infection Control	General Requirements Construction and Renovation References	Building elements – hand washing Surfaces and Finishes	Checklists
Part E Engineering Services	Introduction (under construction)	Other Sections (under construction)	Checklists (under construction)

Australasian Health Facility Guidelines

Does it matter how we classify different parts?

- Some jurisdictions wish to mandate all or part of the guidelines e.g. private hospital regulation
- Implications for the language used – BCA, Standards/Codes, Natspec examples.
- Categorisation allows legislation to refer to only the parts that can or will be mandatory
- Otherwise the guidelines are ‘recommended’ practice only (default position).

Australasian Health Facility Guidelines

Variations to Guideline requirements:

- HFG content – handled at National level (CHAA)
- Particular project/State based variations – handled at State level
- Suggested criteria for variations (NSW trialling)
 - Safety of patients, staff, community
 - Quality of service delivery
 - Quality of facility design (*eg may improve flexibility of use/future proof/streamline construction of this facility*)
 - Direct financial benefit (*must be quantifiable*)
 - Capital cost
 - Operational cost

Australasian Health Facility Guidelines

Review Process:

- Regular review of all sections – ‘sunset dates’
- Standardised commentary form – track comments received/processing/audit trail
- Input from Variation process – Aust/State
- Input from Benchmarking & POE projects
- Input from all CHAA research i.e. the ‘evidence base’ – healthcare designers’ survey, HAI project, culture and health, etc.
- Process of continuous improvement

Australasian Health Facility Guidelines

➤ Lessons Learnt in HFG development

- 'Evidence base' required
- Briefing 'starting point', not a design substitute
- Must be translatable to 'real' space
- Must allow/support > one operational model
- Anticipate the future
- Never finished!



Australasian Health Facility Guidelines

➤ Conclusions

- Must be a 'life jacket' not a 'straight jacket'
- Support, not stifle, innovation
- Cost-benefit analysis should be required for major changes
- Allow designers to do their jobs – don't do it for them!
- Support the delivery of better health care

Australasian HFG Development

AUSTRALASIAN HFG - DRAFT DOCUMENT FOR INTERNAL REVIEW ONLY - NOT FOR INDUSTRY USE

UNSW **Australasian HFG**
THE UNIVERSITY OF NEW SOUTH WALES
SYDNEY • AUSTRALIA

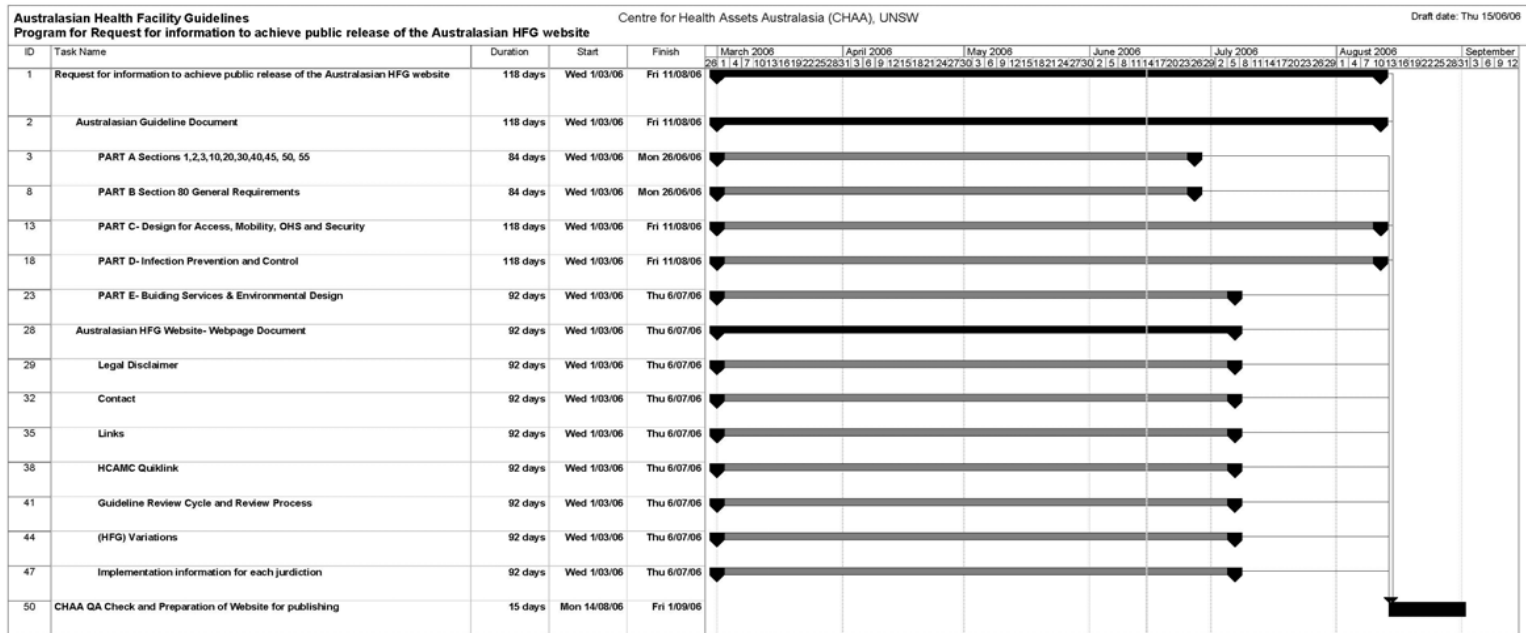
**Australasian
Health
Facility
Guidelines**

- Patrick Chu, CHAA Project Manager Aust HFG Project
 - Project Coordination Working Party Progress Report
 - Time frame for remainder of review
 - Demonstration: Australasian HFG Website

Australasian HFG Development

- **Project Coordination Working Party Progress Report**
 - Part A – first review completed, final draft issued to all jurisdictions for approval.
 - Part B (Section 80 only) – first review completed, final draft issued to all jurisdictions for approval.
 - Part C & D – first review in progress.
 - Part E – first review in progress.
 - Part B – 18 HPU – all Jurisdictions agreed to publish existing document as working draft for industry use.
 - Standard Components – 157(RDS & RLS) – all jurisdictions agreed to publish existing document as working draft for industry use.
 - Website Development – current draft under review by all jurisdictions.

Australasian HFG Development



Timeframe for HFG Review Process

Note that additional time required for jurisdiction-based approvals processes.

Project: NSWHFG_SOA_2005
Date: Thu 15/06/06

Task Split Progress Milestone Summary Project Summary External Tasks External Milestone Deadline

Page 1