



1001010101110100100001101101001011010111001010101001010010010101110101001010101001010111010010000110110
1001011010111001010100101010010101110101001010101001010111010010000110110100101101011100101010
1001010010101110101010010101010010101110100100001101101001011010111010101001010010100101011
010010101011101001000011011010010110101110010101001010010100101011101010100101010100
010010101011100101010010100101001010010100101011101010100101010100

THE IMPACT OF CLIMATE CHANGE ON HEALTH FACILITIES

10010101110101010010101
01010101110100
001010

A preliminary investigation of mitigation and adaptation strategies

Jane Carthey and Venny Chandra
23 Feb 2007



010101011110100100001
0101101011100

UNSW
fbe

Centre for Health Assets Australasia



THE IMPACT OF CLIMATE CHANGE ON HEALTH FACILITIES: A preliminary investigation of mitigation and adaptation strategies

Jane Carthey

Director, Centre for Health Assets Australasia

Venny Chandra

**PhD Candidate and Research Assistant,
Centre for Health Assets Australasia**

Faculty of the Built Environment, UNSW

Web: www.chaa.net.au



THE IMPACT OF CLIMATE CHANGE ON HEALTH FACILITIES: A preliminary investigation of mitigation and adaptation strategies

Outline of presentation

- **Context and background**
- **Implications of climate change on human health & health infrastructure**
- **Case studies**
- **Future research directions**



BACKGROUND

Comments re the IPCC report issued on February 2, 2007 in Paris:

"Warming of the climate system is now unequivocal. That is evident in observations of air and ocean temperature as well as rising global mean sea level."

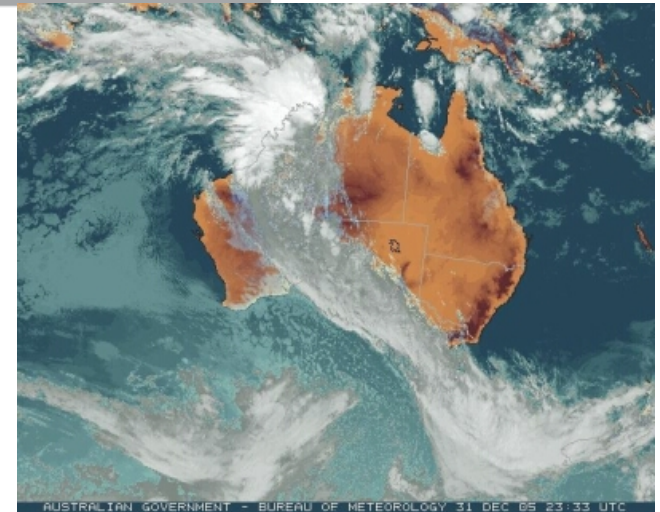
Susan Solomon, co-chair of the working group and an atmospheric scientist with the U.S. National Oceanic and Atmospheric Administration (NOAA).

"The 2nd of February in Paris will be remembered as the day that the question mark was removed from the idea that humans had anything to do with climate change."

Achim Steiner, executive director, United Nations Environmental Programme (UNEP)

BACKGROUND

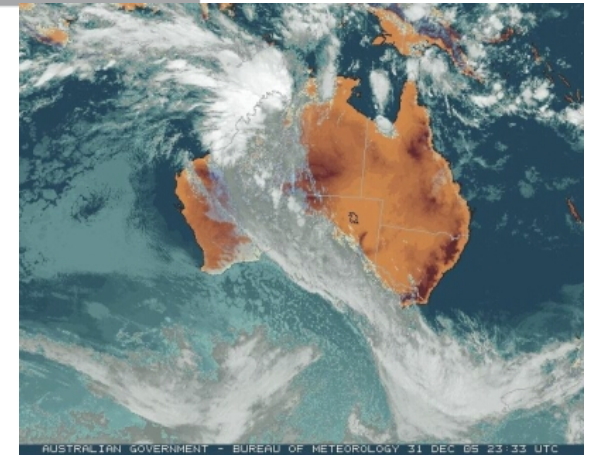
- Global climate change
- Climate change = increased occurrences of extreme weather events
 - [Heat waves and bushfires](#)
 - [Floods, storm surges, tsunamis](#)
- Inevitability of extreme weather events



AUSTRALIA

Predictions:

- Increase in annual average temp of 0.4-2.0°C by 2030
- More heatwaves and fewer frosts
- Prolonged drought and heavy rains
- More severe wind speed – cyclones, storm surges
- More frequent storms and bushfires
- Changing ocean currents - affect coastal waters

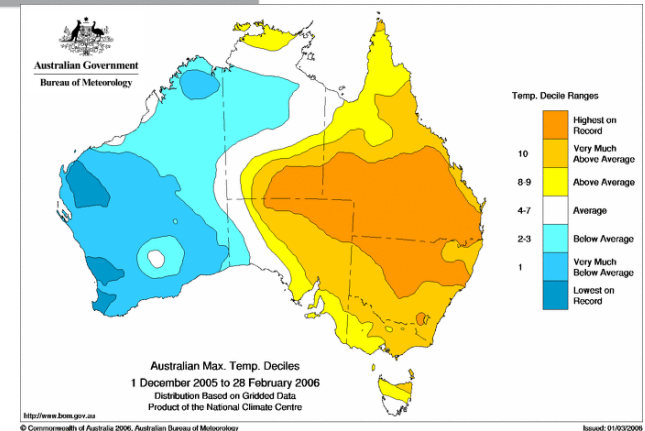


NSW

Predictions:

(increase of 0.4-2.0°C warmer average annual temperature)

- 50-100% more hot days $>35^{\circ}\text{C}$ and fewer cold nights
- More frequent heatwaves
- 70% increase in droughts
- 10-20% increase in the intensity of extreme daily rainfall
- More frequent rainstorms, strong winds (greater fire risks)

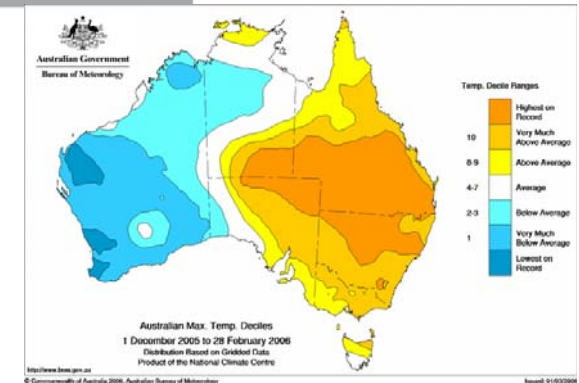


OTHER STATES

Predictions - examples:

(increase of 0.4-2.0°C warmer average annual temperature)

- Reduction in rainfall, runoffs in South'n, East'n Australia
- *South Australia*: 18% increase in the annual days $>35^{\circ}\text{C}$
- *Northern Territory*: 25% more days per year $> 35^{\circ}\text{C}$
- *Victoria*: 6% decrease in extreme daily rainfall with 25% increase in 100-year storm tides along eastern Victoria coast
- *Queensland*: 100 year storm surge height around Cairns increases by 22% and area flooded doubles





IMPACTS OF HEATWAVES

- **On human health**
 - Direct effects on elderly and vulnerable (e.g. heatstroke)
 - Indirect effect (e.g. respiratory & cardiovascular diseases, vector borne diseases such as malaria)
- **On health services**
 - Increased demand (i.e. more staff needed)
 - Changing demographics of patients, often with significant co-morbidities
- **On health infrastructure**
 - Require more/larger facilities
 - Meet the needs of greater numbers of vulnerable patients
 - Cope with bushfires and other heat-related events
 - Transport and communication impacts

IMPACTS OF HEATWAVES

Central Coast NSW: NYD 2006

- Bushfires closed major roads north of Sydney (including the F3 freeway); major disruption to travellers in both directions.
- Emergency Management response: bushfire control, evacuation of residents at risk, traffic control for the F3 and traditional health service responses as required.
- People flocked to the Emergency Dept of Gosford Hospital to keep cool (air conditioning)





RESPONSES TO HEATWAVES

- Immediate response
 - Thermal control
- Long term response
 - Urban planning
 - Guidelines (eg ventilation, air quality, thermal condition)
 - Design (eg landuse, green spaces, water bodies)
 - Improved communication and transport links
 - Building planning
 - Architectural design
 - Facility management practices

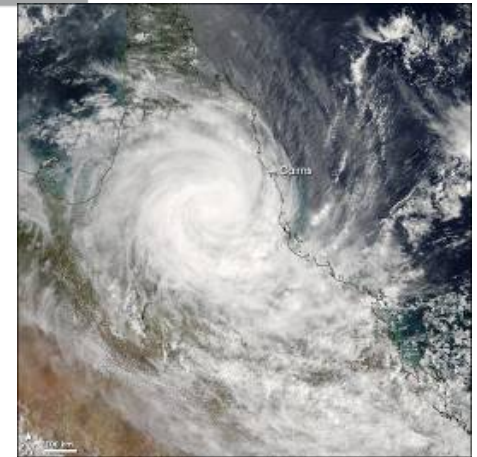


IMPACTS OF FLOODS, STORM SURGES, TSUNAMIS

- **On human health**
 - Deaths and injuries
 - Infectious diseases
- **On health services**
 - Increased demand
 - Plans for emergency situations
- **On health infrastructure**
 - Structural damage
 - Stretched capacity

IMPACTS OF FLOODS, STORM SURGES, TSUNAMIS

Cyclone Larry, March 2006



- Significant damage or disruption to hospital infrastructure
- Innisfail Hospital - severe damage / closed,
- ED continued to operate with support from Townsville and Cairns Base Hospitals.
- Herberton hospital - without power until generator provided
- Atherton Hospital - one wing evacuated due to a leaking roof
- medical support from within the State, additional nurses sent from Brisbane and Environmental health and mental health officers activated in the region.

RESPONSES TO FLOODS, STORM SURGES, TSUNAMIS

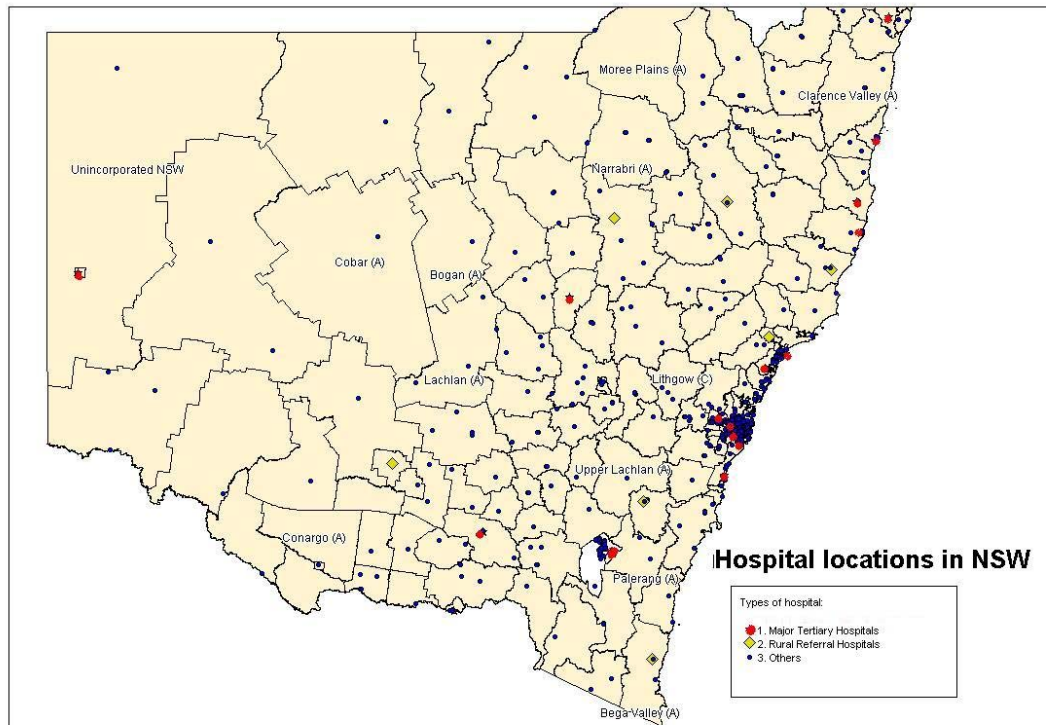
- Immediate response
 - Increased public awareness
 - Warning procedure
 - Evacuation
 - Administrative operation
 - Relief plan: surge hospitals, counselling, etc
- Long term response
 - Urban planning
 - Regulations
 - Building design
 - Structural improvements



RESEARCH AGENDA

- To **refine our understanding** of the impacts of extreme weather events on human health, health services, and health infrastructures
- To **assess the current adaptive capacity** of health services and health infrastructures
- To **identify practical adaptive and mitigation strategies for health services** and infrastructure subjected to extreme weather events

CURRENT RESEARCH



NSW Health/GHO project:

Where are NSW health facilities located?

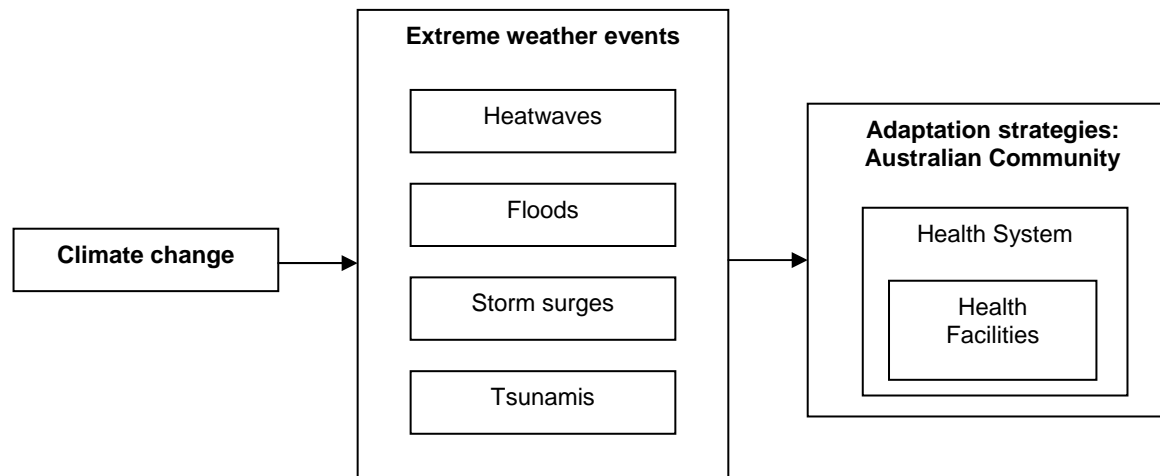
How will extreme weather events affect these locations?

What additional/different health service needs will climate change impose?

What do we need to do to prevent health service disruption due to extreme weather events?

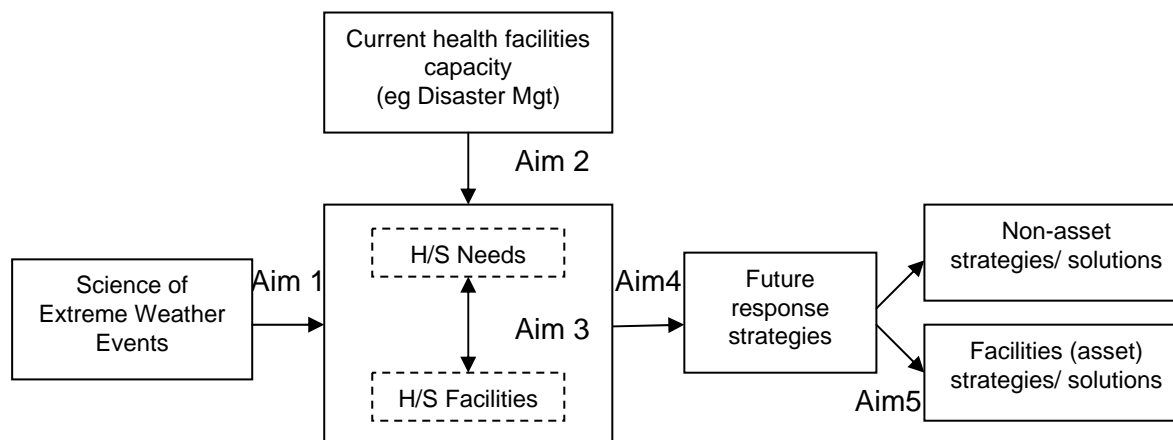


FUTURE RESEARCH



Context

FUTURE RESEARCH



Aims and Outcomes of the Research

010101011110100100001
0101101011100

UNSW
f b e

Centre for Health Assets Australasia

A light blue geometric wireframe graphic consisting of various lines and shapes, resembling a stylized architectural or technical drawing, is positioned to the left of the word 'CONCLUSION'.

CONCLUSION

CHAA website:

www.chaa.net.au

T: 02 9385 5619

E: chaa.admin@unsw.edu.au