

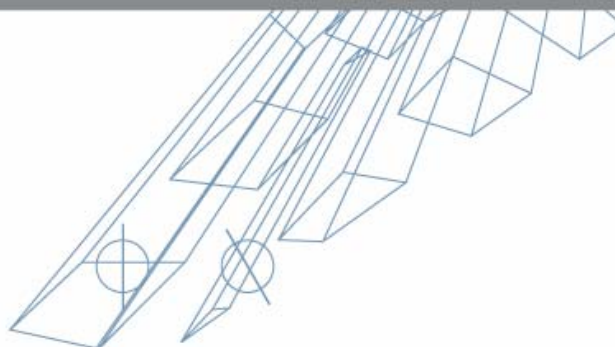


10010101011101001000011011010010110101110010101010010100101001010111010100101010100101011101001000010110
10010110101110010101010010100101001010111010100101010100101010111010010000110110100101101011100101010
10010100101011101010100101010100101011101001000011011010010110101110101010010100101001010111
010010101011101001000011011010010110101110010101001010010100101011101010100101010100
0100101010111001010101001010010100101010101001010101110100100001

Centre for Health Assets Australasia

NEW ZEALAND HEALTH CAPITAL INVESTMENT INDUSTRY BRIEFING - 25 OCTOBER 2006

10010101110101010010101
01010101111010
001010



010101011110100100001
00101101011100



AUSTRALIA/NZ HEALTH FACILITY GUIDELINES DEVELOPMENT AND IMPLEMENTATION

Jane Carthey,
Director, Centre for Health Assets Australasia
Faculty of the Built Environment, UNSW
Web: www.chaa.net.au

Overview of Presentation:

- **CHAA research programs**
- **Australasian HFG Project:** development parameters, structure, governance, features, review and variation processes.
- **Other CHAA areas of research**

A blue wireframe architectural drawing of a building structure, showing various geometric shapes and lines, is positioned in the upper left corner of the slide.

AUSTRALIA/NZ HEALTH FACILITY GUIDELINES DEVELOPMENT AND IMPLEMENTATION

CHAA RESEARCH PROGRAMS

1. Health facility standards and guidelines
2. Benchmarking and post occupancy evaluation
3. Capacity building/knowledge management

CHAA Research Program

1.0 STANDARDS & GUIDELINES 2006

1.1 NSW Health Facility Guidelines

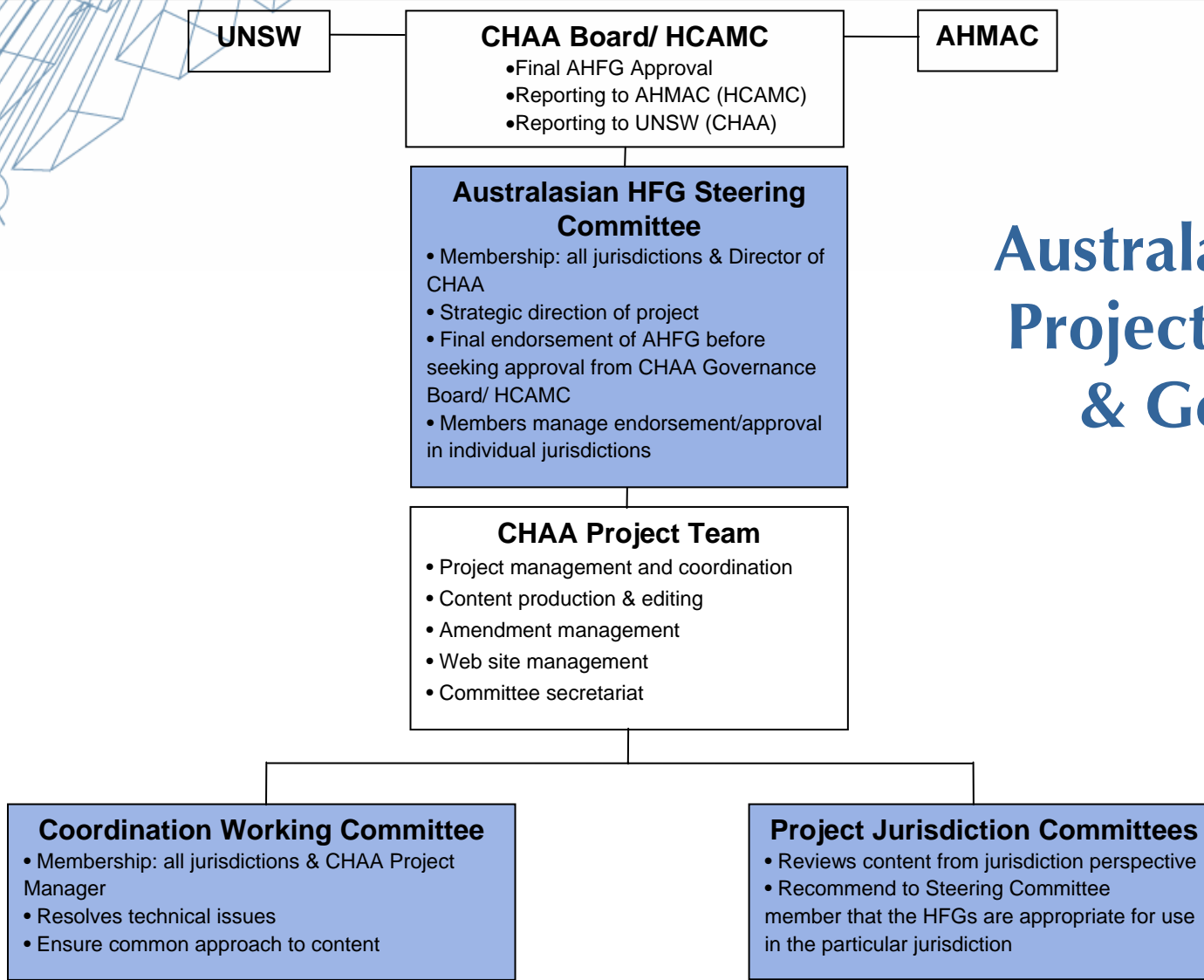
- *continues* development of the NSW guidelines that continue to be translated into the Australasian project.
- *develops* HFG content for use by NSW Health Facility Briefing system

CHAA Research Program

1.0 STANDARDS & GUIDELINES 2006

1.2 Australasian Health Facility Guidelines

- In 2005 *analysed* the needs of each jurisdiction
- In 2006 project has been conducted in accordance with a *work and implementation plan*.



Australasian HFG Project Structure & Governance

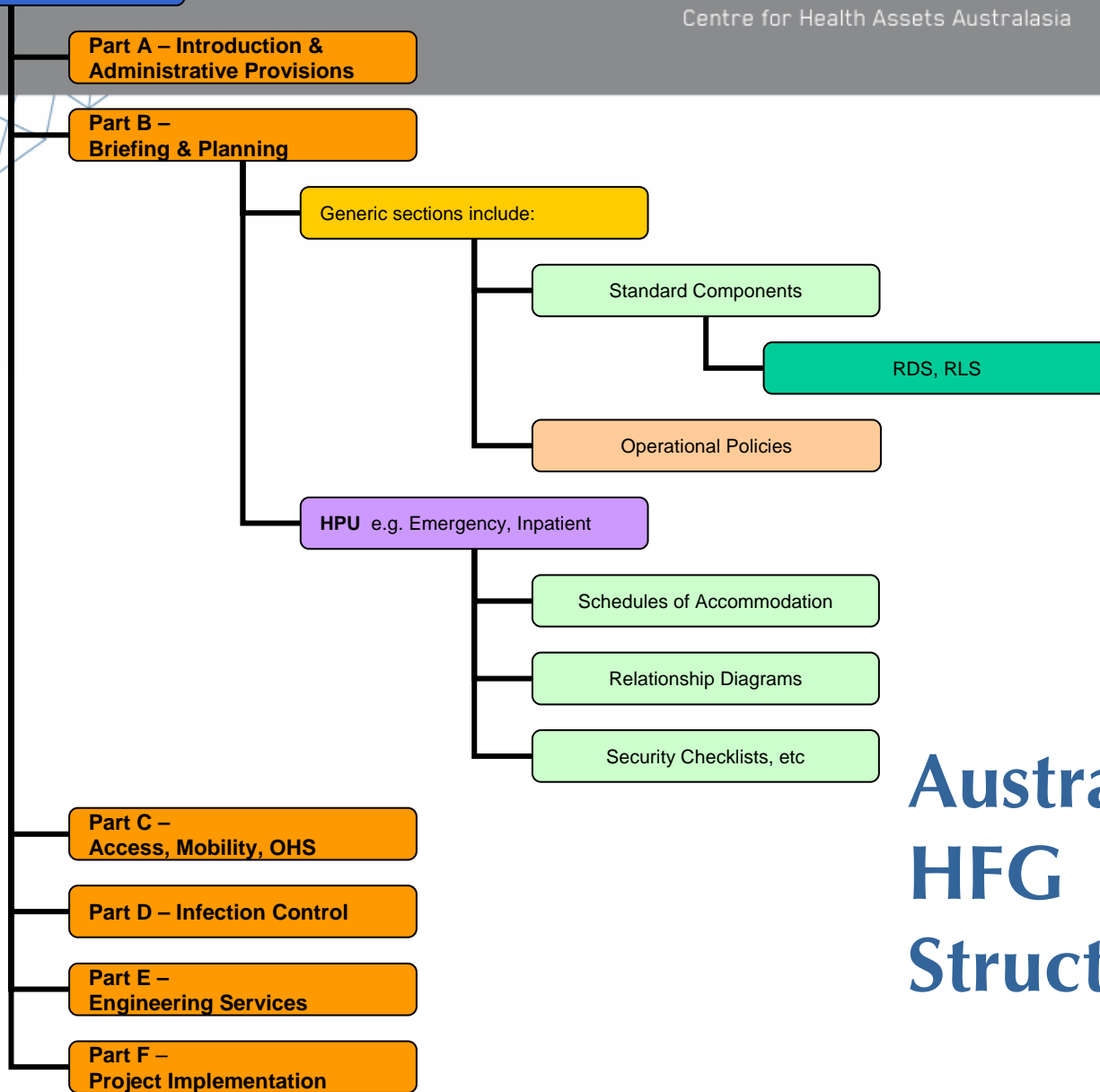
Australasian HFG Development System Parameters include:

- Regulatory environment – mandated or advisory only
- Public and private funder requirements
- Quality/experience/availability of design consultants
- Feedback loops
- Political climate

Australasian HFG Development

Key Benefits include:

- Reduced debate over repeatable elements
- Simplified design process
- Reduced number design variations
- Reduced need for consultation/user groups
- Reduced design time
- Assist in meeting minimum legal obligations – standards, codes, etc



Australasian HFG Structure

Australasian HFG Features

- Web access
- Minimal costs to use
- Links to NSW Health Facility Briefing System
- **Generic parts** that cover all health facilities – std comps, RDS, RLS (PDF format)
- **Specific parts** for specific hospital units
HPU (health planning units) or departments

Design Guidelines for Hospitals + Day Procedure Centres

Clause ID: 00001 Category: NSW All Origin ID: NSW-HBAS

Subject: **Part A - Introduction and Instructions for Use**

Sub-heading: General

Acknowledgements: 2 0.00 NSW Health acknowledges the following contributors to the development of these Health Facility Guidelines:

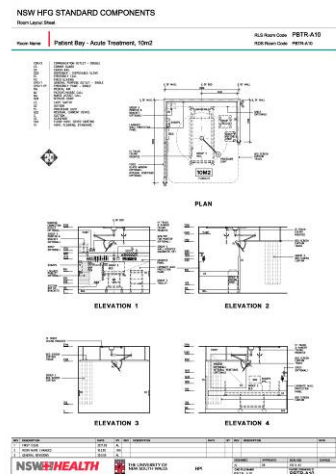
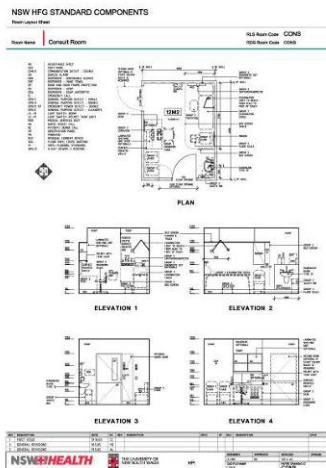
Super Heading: Clause - The Victorian Department of Human Services for contributing the initial database from which these Guidelines have been developed.
- Health Projects International for advice and assistance in utilising the database.

Attachments: Attachment: Emergency Unit ✓ 1.00
Issue ID: Opening Theatre ✓ 1.00
Envelope ID: Intensive Care Unit ✓ 1.00
Status: Accept: Anaesthetic Suite ✓ 1.00
Scan Code: Intubation Centre ✓ 1.00
X-Ray: Intensive Care ✓ 1.00
Hipwink: Community Health ✓ 1.00
Furn 3 Wings, 1-3ph ✓ 1.00
Frost Occupancy Eval ✓ 1.00

Buttons: First Previous Next Last Find Find Next Duplicate New Delete Refresh

Australasian HFG Features

- Body of knowledge
- Acceptable/recommended standards to support healthcare delivery
- Focus on smallest element – ‘room/space’
- Purpose is briefing not prescriptive design



Australasian HFG Current Status

Generic sections that have been reviewed for Australasian use:

- Part A (administrative provisions)
- Part B (general, std comps)
- Part C (access, mobility, OHS)
- Part D (infection control)

Generic Sections developed for Australasian use:

- Part E Engineering Services

Generic Section to remain NSW specific:

- Part F Project Implementation

Australasian HFG Current Status

HPU (NSW) available *now*:

- Ambulatory Care
- Community Health
- Emergency
- Inpatient
- Intensive Care
- Operating
- Mental Health (adult acute)
- Adolescent & Child Mental Health
- Ambulatory Mental Health
- Psychiatric Emergency Centre (PEC)
- Allied Health
- Clinical Information
- Medical Imaging (CAT, MRI, PET, general)
- Maternity
- Paediatric/Adolescent
- Rehabilitation
- Renal Dialysis



Australasian HFG Current Status

HPU (NSW) in development/review available late 2006/early 2007:

- Pathology
- Oral Health
- Multipurpose Centre
- CSSU
- Day Procedure
- Main Entrance
- Administration
- Mortuary
- Staff Amenities
- Aged Person Psychiatric
- Radiotherapy
- Nuclear Medicine (2007)
- Ambulance Station (2007)

+ Part D Infection Control – major review (2007)

Australasian HFG Parts & Use

Website hosting 'Australasian HFG'

- Commentary (C) – website information/introductory pages, entry point to:

Health Facility Guidelines:

Different purposes/different parts

- Guidance (G) - 'how to do it'
- Performance requirements/recommendations (P) – 'what it should do'
- Advisory (A) – 'examples of how to achieve it'

Australasian HFG - Status of Parts

HFG Part/ component	Guidance (G) <i>'How to do it'</i>	Performance Requirements (P) <i>'What it should do'</i>	Advisory (A) <i>'Examples of how to achieve it'</i>
Status	Not mandatory	May be 'mandatory' or recommended'	Not mandatory but may be: normative' or 'informative'
Part A Introduction & Instructions for Use	How to Use the Guidelines, Outline of structure, content and purpose of each section, Terms of Reference, Tables of abbreviations, glossary, References and further Reading	Not applicable	Not applicable
Part B Briefing and Planning	Section 80 General Requirements (whole section) All HPU sections: -Introduction -Planning Principles	All HPU sections: -Design -Components of the unit: general provisions	Section 90 Standard Components All HPU sections: -Non Standard Components -Schedules of accommodation -Functional Relationship Diagrams -Security Issues/checklists -Other checklists (if produced) -Room Data Sheets -Room Layout Sheets
Part C Access, Mobility, OHS and Security	Introduction Planning	Space Standards and Dimensions Human Engineering Signage Safety and Security	Checklists
Part D Infection Control	General Requirements Construction and Renovation References	Building elements – hand washing Surfaces and Finishes	Checklists
Part E Engineering Services	Introduction (under construction)	Other Sections (under construction)	Checklists (under construction)

Australasian HFG Development

Does classification of parts matter?

- Some jurisdictions wish to mandate all or part of the guidelines eg private hospital regulation
- Implications for the language used – BCA, Standards/Codes, Natspec examples.
- Categorisation allows legislation to refer to only the parts that can or will be mandatory
- Otherwise the guidelines are ‘recommended’ practice only (default position).

Australasian HFG Development

Variations to Guidelines:

- HFG content – handled at Aus/NZ level (CHAA)
- Particular project/State/jurisdiction based variations – handled at State/jurisdiction level
- Suggested criteria for variations (NSW trialling)
 - **Safety** of patients, staff, community
 - **Quality of service delivery**
 - **Quality of facility design** (eg may improve flexibility of use/'future proof'/streamline construction of this facility)
 - **Direct financial benefit** (must be quantifiable)
 - Capital cost
 - Operational cost

Australasian HFG Review

Review Process:

- Regular review of all sections – ‘sunset dates’
- Standardised commentary form – track comments received/processing/audit trail
- Input from Variation process – Aust/State
- Input from Benchmarking & POE projects
- Input from all CHAA research ie the ‘evidence base’ – healthcare designers’ survey, HAI project, culture and health, etc
- Process of continuous improvement

Australasian HFG Development

Lessons Learnt:

- 'Evidence base' required
- Briefing 'starting point', not a design substitute
- Must be translatable to 'real' space
- Must allow/support > one operational model
- Anticipate the future
- Never finished!

Australasian HFG Implementation

Conclusions:

- Must be a 'life jacket' not a 'straight jacket'
- Support, not stifle, innovation
- Cost-benefit analysis should be required for major changes
- Allow designers to do their jobs – don't do it for them!
- Support the delivery of better health care

Australasian HFG Implementation

Australasian **HFG**

**Australasian
Health
Facility
Guidelines**

- Project Coordination Working Party Progress Report
- Time frame for review/ HFG launch
- Australasian HFG website



Australasian HFG Implementation

Project Coordination Working Party:

- **Part A** – review completed, final draft issued to all jurisdictions for approval.
- **Part B (Section 80 only)** – review completed, final draft issued to all jurisdictions for approval.
- **Part C** – reviewed – issued for approval on 1 September, further review in 2007.
- **Part D** – review, requires major review/further development in 2007
- **Part E** – review completed. WA opted out. Issued to other States for approval.
- **Part F** – no review required as published as NSW specific document for individual jurisdictions to approve or not for use in their domain.
- **Part B** – 28 HPU (19 + extra 9 by end of 2006) – all jurisdictions agreed to publish NSW versions document as working draft for industry use for 12 months – to be reviewed at end of 2007.
- **Standard Components – 157(RDS & RLS)** – all jurisdictions agreed to publish existing document as working draft for industry use.
- **Website Development** – release draft under review by all jurisdictions. Projected release for end of November 2006
- **New website address** to be launched from end of November (HCAMC owned)

Australasian HFG Launch

Part A	Final review
Part B S80 General	Final review
Part C	Final review/ plus review in 2007
Part D	Final review/ plus extensive review in 2007
Part E	Final review
HPU/Part B S90 Std Components	Accept NSW versions as they stand; review at end of 2007
Website update	Final review
HFG Launch	Jurisdictional approvals sought for release at end November 2006



Australasian HFG Implementation

CHAA contact details:

Website address: www.chaa.net.au

NSW HFG: www.healthdesign.com.au/nsw.hfg

AUST HFG: new web address to be advised

Telephone: +61 2 9385 5619

Email: chaa.admin@unsw.edu.au